

# Scissor machine manual

Thank you for purchasing our products. In order to make better use of this machine, please read this user manual in detail!

# Foreword

Dear user:

Thank you very much for using our company's products. This product uses high-quality original SMD motherboard and dual stepping crane system. It is easy to operate, beautiful in appearance and comprehensive in function. It is an ideal product for investment and entrepreneurship. We can be your customers We are honored, we sincerely hope that when you use our products, you can give us valuable opinions, and we will work hard to continuously update and improve to try to meet your requirements?

In order to make this product play a strong business effect and great economic benefits, please read this manual carefully. If you have any questions during the use, please call us and write to us. We will serve you wholeheartedly.

## table of Contents

A. Specifications.....	3
B. Precautions.....	3
C. game instructions.....	4
D. Motherboard description.....	4
E. Function settings.....	5
F. Troubleshooting.....	10
G. After sales service.....	11

## A. Specifications

1. Size: 930mm × 960mm × 1910mm
2. Mass: 80kg
3. Power: 220vac
4. Power: 250w
5. Frequency: 50hz

## B. Precautions

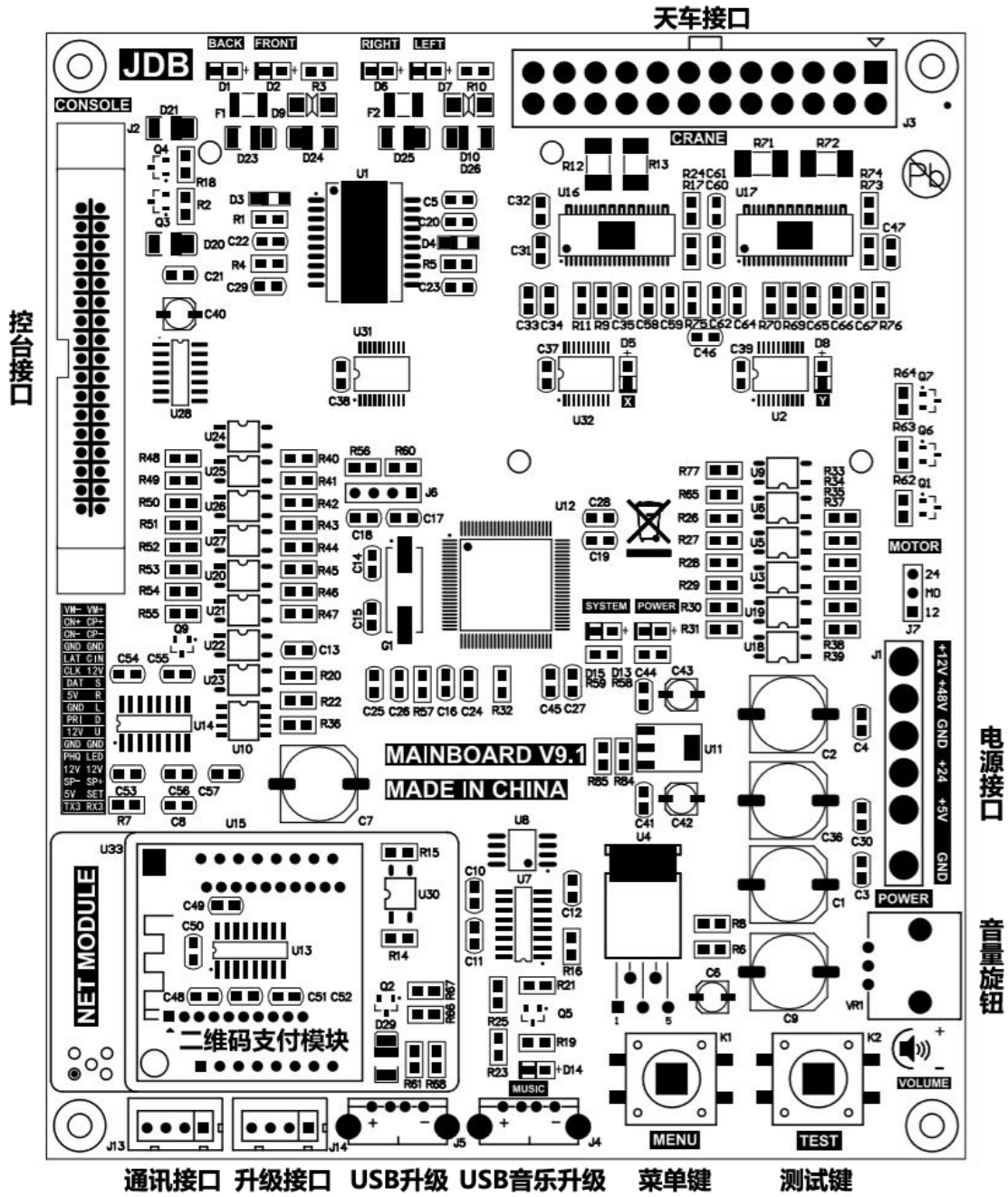
1. Before turning on the machine, please first reduce the cable tie that binds the crane. Only in this way can the crane work properly?
2. Please insert the tokens you need (comparative coin dispensers) on the coin dispenser before use?
3. Should the coin slot be set to no normally open mode at the same time?
4. Be sure to turn off the power when troubleshooting to avoid electric shock or short circuit accidents?
5. Please do not pull out or insert the plug instantly to avoid electric shock or short circuit accident?
6. Do not touch the plug with wet hands to avoid electric shock?
7. Please do not expose the power cord to the channel, otherwise it is easy to damage the power cord, causing electric shock and short circuit accidents?
8. Don't put things near the power cord to avoid causing a fire?
9. When unplugging the power cord, please pull it out by holding the plug. Do not pull on the power cord to avoid damaging the wire and causing a fire or electric shock?
10. In case the power cord is damaged, please replace it in time?
11. Without the permission of our staff, we can not disassemble, replace or modify our products without authorization to avoid improper operation, damage to this product, and threaten the personal safety of players or bystanders?

12. Please pay attention to regular inspection and maintenance of this product?
13. Make sure the "warning label" is clean. Make sure that the text on it is clearly visible. When the dirt on it cannot be cleaned and the text is blurred and cannot be seen clearly, you should replace the label immediately?
14. When performing troubleshooting not mentioned in this manual, please be sure to contact our technical support and follow the instructions of the technical support?

## **C. game instructions**

1. Putting game coins into a coin slot?
2. Move the joystick to the position of the gift you want?
3. Press the start button to start the scissors in the direction of the hanging wire?
4. When the scissors reach the hanging line, release the button and the scissors move?
5. Scissors cut the gift hanging line and remove the gift from the gift door?

# D. Motherboard description



## E. Function settings

Function setting and function description			
Press the menu button on the motherboard to enter the system settings. Use the joystick up and down buttons (or before and after the setup button) to select a setting item. Use the joystick left and right buttons (or the setup button left and right) to set the project parameters. (Set key to confirm) Enter the sub menu?			
MENU	Function submenu	parameter	Setting instructions
<b>1</b> BASIC SETUP	A. COIN	(1-10) Default: 1	Set how many coins to play to start the game?
	B. PLAY TIME	(1-5) Default: 30	<b>Game time settings</b>
	C. MODE	(0-1) Default value: 0	<b>0 is random mode, 1 is fixed mode</b>
	D. STB MUSIC	(0-1) Default value: 0	0 is on, 1 is off
	E. VOLUME SET	(1-32) Default: 16	The larger the value, the louder the volume.
	F. MUSIC MODE	(0-1) Default: 1	0 is the external u disk playback mode, 1 is the internal storage playback mode?
	BACK AND EXIT		<b>Exit basic settings submenu</b>
<b>2</b> WIN SETUP	A REWARDS	(1-999) Default: 100	Set a Gift Rebate Rate
	B REWARDS	(1-999) Default: 100	Set b gift rebate rate
	C REWARDS	(1-999) Default: 100	Set c gift return rate
	D REWARDS	(1-999) Default: 100	Set d Gift Rebate Rate
	E REWARDS	(1-999) Default: 100	Set e-Gift Rebate Rate
	F REWARDS	(1-999) Default: 100	Set F Gift Rebate Rate
	G REWARDS	(1-999) Default: 100	Set G Gift Rebate Rate
	H REWARDS	(1-999) Default: 100	Set h gift rebate rate
	I REWARDS	(1-999) Default: 100	Set i Gift Rebate Rate
	J REWARDS	(1-999) Default: 100	Set j gift rebate rate
	BACK AND EXIT		Exit the winning settings submenu
	A. LR SPEED	(1-10) Default: 10	The larger the value, the faster the speed

<b>3 CROWN SETUP</b>	B. FB SPEED	(1-10) Default: 10	The larger the value, the faster the speed
	C. SC WIDTH	(1-10) Default: 10	The larger the value, the larger the opening of the scissors
	D. SC OFFSET	(1-100) Default: 50	The larger the value, the greater the deviation when not winning
	BACK AND EXIT		Back to the crane setup submenu
<b>4</b>	A-AXIS CALIBRA	a position x coordinate y coordinate	Press the enter key to enter the previously preset position, and then move the cutter head of the scissors with the joystick so that the cutter head is in the middle position of the hanging rope. Short press the button to perform the scissors test. Level menu? If you don't need to adjust the position, press and hold the button for more than 3s to exit?
	B-AXIS CALIBRA	b position x coordinate y coordinate	Press the enter key to enter the previously preset position, and then move the cutter head of the scissors with the joystick so that the cutter head is in the middle position of the hanging rope. Short press the button to perform the scissors test. Level menu? If you don't need to adjust the position, press and hold the button for more than 3s to exit?
	C-AXIS CALIBRA	c position x coordinate y coordinate	Press the enter key to enter the previously preset position, and then move the cutter head of the scissors with the joystick so that the cutter head is in the middle position of the hanging rope. Short press the button to perform the scissors test. Level menu? If you don't need to adjust the position, press and hold the button for more than 3s to exit?



**CROWN  
CALIBRA**

D-AXIS CALIBRA	d position x coordinate y coordinate	Press the enter key to enter the previously preset position, and then move the cutter head of the scissors with the joystick so that the cutter head is in the middle position of the hanging rope. Short press the button to perform the scissors test. Level menu? If you don't need to adjust the position, press and hold the button for more than 3s to exit?
E-AXIS CALIBRA	e position x coordinate y coordinate	Press the enter key to enter the previously preset position, and then move the cutter head of the scissors with the joystick so that the cutter head is in the middle position of the hanging rope. Short press the button to perform the scissors test. Level menu? If you don't need to adjust the position, press and hold the button for more than 3s to exit?
F-AXIS CALIBRA	f position x coordinate y coordinate	Press the enter key to enter the previously preset position, and then move the cutter head of the scissors with the joystick so that the cutter head is in the middle position of the hanging rope. Short press the button to perform the scissors test. Level menu? If you don't need to adjust the position, press and hold the button for more than 3s to exit?
G-AXIS CALIBRA	g position x coordinate y coordinate	Press the enter key to enter the previously preset position, and then move the cutter head of the scissors with the joystick so that the cutter head is in the middle position of the hanging rope. Short press the button to perform the scissors test. Level menu? If you don't need to adjust the position, press and hold the button for more than 3s to exit?

	H-AXIS CALIBRA	h position x coordinate y coordinate	Press the enter key to enter the previously preset position, and then move the cutter head of the scissors with the joystick so that the cutter head is in the middle position of the hanging rope. Short press the button to perform the scissors test. Level menu? If you don't need to adjust the position, press and hold the button for more than 3s to exit?
	I-AXIS CALIBRA	i position x coordinate y coordinate	Press the enter key to enter the previously preset position, and then move the cutter head of the scissors with the joystick so that the cutter head is in the middle position of the hanging rope. Short press the button to perform the scissors test. Level menu? If you don't need to adjust the position, press and hold the button for more than 3s to exit?
	J-AXIS CALIBRA	j position x coordinate y coordinate	Press the enter key to enter the previously preset position, and then move the cutter head of the scissors with the joystick so that the cutter head is in the middle position of the hanging rope. Short press the button to perform the scissors test. Level menu? If you don't need to adjust the position, press and hold the button for more than 3s to exit?
	BACK AND EXIT		Exit the overhead crane calibration submenu
<b>5</b> FACTORY TEST	A. INTELLIGT		Automatic test after entering
	B. CONSOLE TEST		Test the console rocker button switch is good
	C. CRANE TEST		Test if the crane sensor or motor is good
	D. SCISSORS TEST		Test the scissors sensor or motor for good performance
	BACK AND EXIT		Back to factory test submenu

<b>6</b> ACCOUNTS QUERY	A. COININ	(0-99999)	Can be cleared by pressing a button
	B. MOBPAY	(0-99999)	Can be cleared by pressing a button
	C. INCOME	(0-99999)	Can be cleared by pressing a button
	D. GIFT	(0-99999)	Can be cleared by pressing a button
	BACK AND EXIT		Back to account query submenu
<b>7</b> RESTORE SETUP	RESTORE		Does the factory reset not clear the accounts?
<b>8</b> LANGUAG E SETUP	LANGUAG		System language setting, Chinese or English?
<b>SAVE AND EXIT</b>	BACK AND EXIT		Save the set parameters, and the system will restart automatically after saving.

### Game mode description:

➤ **Random mode:**

In the random mode, the probability is that the prize is won at a random position, such as 1 time in 100 times, then the winning position may be the 1st-100th position.

➤ **Fixed mode:**

In the fixed mode, the probability is that the prize will be won at a fixed position, such as 1 win in 100 times, then the winning position will win in the 100th position?

## F. Troubleshooting

Common fault description of machine		
error code	cause of issue	Approach
<b>Fault code-&gt; 01</b>	<b>Left and right reset sensor or left and right stepping motor failure</b>	<b>Replace the sensor or motor</b>
<b>Fault code-&gt; 02</b>	<b>Front and rear reset sensor or front and rear stepper motor failure</b>	<b>Replace the sensor or motor</b>
<b>Fault code-&gt; 03</b>	Check scissors reset sensor or scissors motor	<b>Replace the sensor or motor</b>
No response when booting	May be a power problem	Check whether the power supply has electrical input, and whether the switch has bad contact?
No coin or card currency	Defective slot machine or line	Check if the coin machine line is in poor contact or replace the coin machine

## G. After sales service

1. Before using this product, please be sure to read this instruction manual carefully; crashing, disassembling, excessive input voltage and reverse polarity of the voltage, causing permanent hardware damage, is not covered by the warranty?
2. Due to the special nature of the product, the product will not be returned once sold. The product is guaranteed for one year. The buyer will bear the cost of return logistics and repair it for free. If the part is replaced, only the part cost will be charged. It is not covered by the warranty. The maintenance after the warranty period is charged according to the actual costs incurred?
3. The warranty period is calculated from the month the buyer picks up the goods ??

- 4. Party A is not responsible for providing after-sales service to the end user (i.e., the buyer's customer); the seller only provides the buyer with product warranty services damaged by non-human factors?**
- 5. Due to irresistible factors such as natural disasters, lightning, accidents, and damage to the system caused by factors such as power supply lines, water ingress, contact with corrosive materials, humid environment, crime, etc., the seller is obliged to provide consulting services, but it is not a What is the seller's free warranty?**
- 6. The company does not send out technical support on-site service? But can provide telephone technical support?**