

Super Lollipop Vending Machine Instruction Manual



1 : Please read the instructions carefully

2: Please take care on story-telling, so feel free to browse

3: Products keep pace, my Division reserves the right to amend specifications without prior notice.

Matters needing attention

1. Please do not place this machine in uneven, inclined and easy to vibrate place
2. Check the line once a week, and check the equipment monthly
3. Please bring small fire extinguishers to ensure the safety of the premises, the Staffs off duty, the power supply should be cut off
4. Pay attention to protect the line, prevent insect rats destroy the line
5. Do not place the machine in sunlight directly so as not to damage all parts of the machine

Warning

- 1, must be grounded, the equipment three plug power must be inserted into the ground type power outlet;
- 2, Precision equipment, please do not drop it or make it hit;
- 3, no machine near the high magnetic field or can produce strong radio wave objects
- 4, the machine is not afraid of waterproof, fire control or electric shock, please do not make any liquid invasion in the machine, or exposed to water after dripping wet environment
- 5, this machine does not have fire resistance, please do not close or touch any fire source

Danger

1. do not use wet hands to contact the power plug;
2. do not scratch, cut or bend the power cord too much;
3. do not load the power cord'
4. please do not use the broken power cord of the insulating layer;
5. do not allow professionals to repair the machine at random, before repairing the power supply should be cut off

Catalog

Product Picture	1
Matters needing attention.....	2
一. Product specifications and accessories.....	3
二. Game instructions.....	3
三. Product Presentation.....	4-5
四. Function setting operation method.....	6
五. Error code.....	6
六. Setting method.....	6
1. Function setting table	7
2. Difficulty level and prize rate comparison table.....	8
3. Enter test mode.....	9
七. Maintenance	9
八. Product warranty clause.....	10

一. Product specifications and accessories

1: Name: Super Lollipop Vending Machine

Size: W750*D810*H1580 (MM)

Weight: 70KG

Power: 100W

Material : Hardware + Acrylic

(such as changes in performance , will not have further notice.)

2 : Spare parts

Ordinal	Name	Quantity
1	Key	2
2	Power cord	1
3	Instructions	1

二. Game Description

Coin Begins:

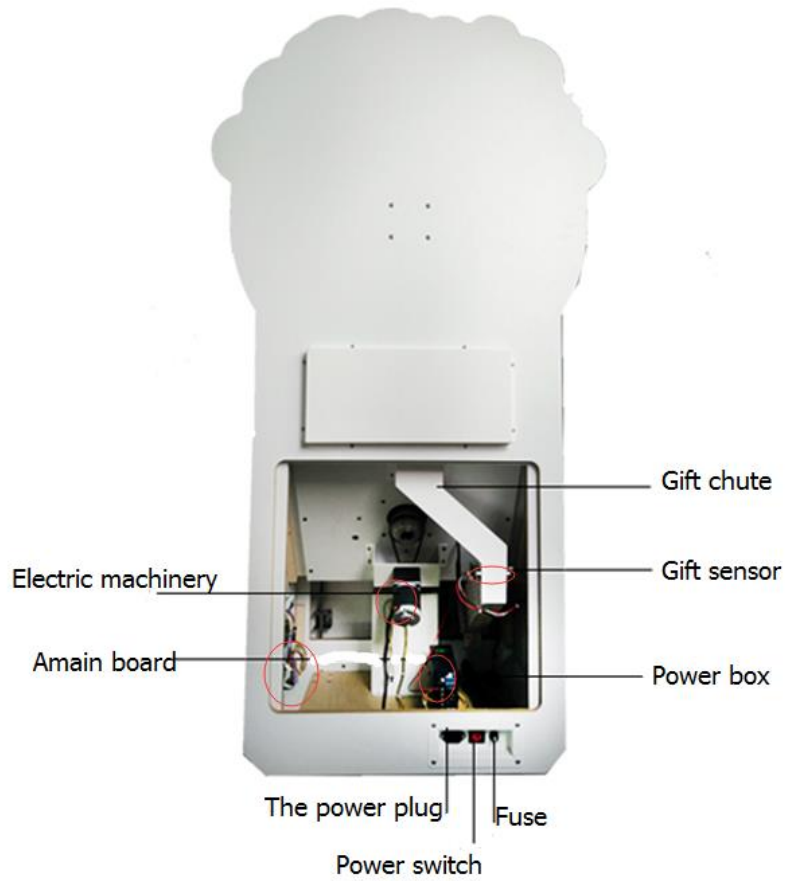
- 1: Press the button and the word light starts flashing ;
- 2: Press the button again, the word light stops blinking, and the number of lights is the number of candies ;
- 3: Pick up the candies from the extract.

三. Product presentation

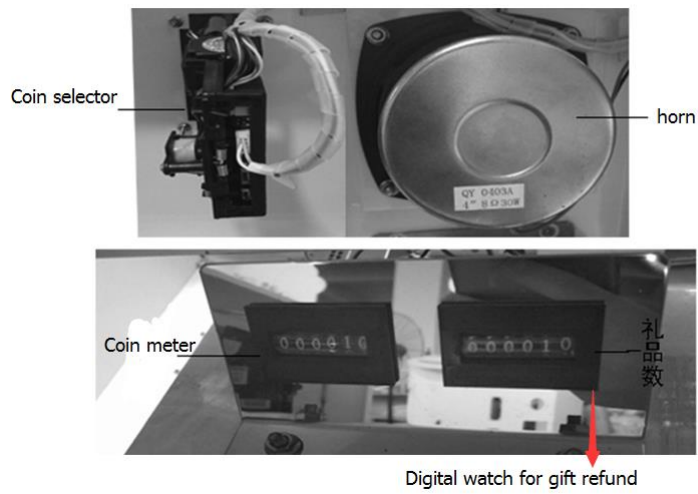
Front view



Back view



Open content view



四. Function setting method :

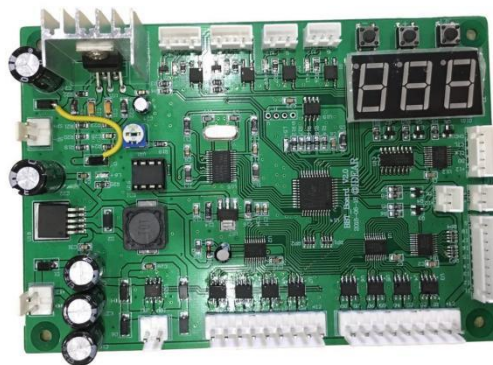
- a) In standby mode, press the “Set” button on the motherboard to enter the function setting options.
- b) Press the "+" key to increment the parameter value. (long press can be quickly incremented)
- c) Press the "-" key to decrement the parameter value. (long press can quickly decrement)
- d) Set the item number End, and press the “Set” button to exit.

五. Error code, meaning, cause of failure:

error code	meaning	Solution
E1	Sugar failure	After the candy is finished, add the candy and press the "Repair" button to fix it.

六. Setting method

Main board



1. Function setting table

No	Setting item	Function Description	Range value	Factory default
1	P01	Coins for per game	1—9	1
2	P02	game time	10—90	30
3	P03	Winning rate	0—18	8
4	P04	Language setting	(0: English 1:Chinese)	0
5	P05	Power-down memory	(0: off 1: on)	1
6	P06	Standby music	(0: off 1: on)	1
7	P07	Prize out of time	0~60S	20
8	P08	Play times per round	1~9	1
9	End	Press the "Settings" button to automatically save and exit the function settings.		

2. Difficulty level and prize rate comparison table

Difficulty level	Winning rate	Number of gifts per 100 innings	0 number of occurrences	1 number of occurrences	2 number of occurrences	3 number of occurrences	5 number of occurrences	10 number of occurrences
0	Non controlling probability							
1	1.8	180	0	67	17	8	5	3
2	1.7	170	0	69	16	8	5	2
3	1.6	160	0	70	20	5	3	2
4	1.5	150	0	79	12	4	3	2
5	1.4	140	0	84	10	2	2	2
6	1.3	130	0	87	7	3	2	1
7	1.2	120	0	86	10	3	1	0
8	1.1	110	0	90	10	0	0	0

3. Enter test model

(1) Press and hold the "+" and "-" keys of the mainboard at the same time, and

then power on again. After seeing the mainboard display "t01", let go and enter the test mode.

(2) Press "Set" to select the test menu "t01", "t02", and "T03".

(3) Press the "+" key to increase the test unit, and press the "-" sign to decrement the test unit.

(4) T1: Input test 1: Coin insertion 2: Optical eye feedback 3: Console button 4: Repair button

(5) T2: Output test 1~12: Test turntable light. 13: Ball motor 14: Gift indicator 16: Gift motor

(6) T3: Sound test

七. Maintenance

When the outside of the machine is dirty, please wipe it with a soft dry cloth. If the dirt is quite serious, wipe it with a soft cloth diluted with 5-6 times the detergent, and then dry it with a dry cloth.

Never use liquid containing alcohol or volatile solvent to wipe it.

This will cause damage to surface treatment paint, or use chemicals containing cloth to wipe it or place it on the machine for a long time.

八. Product warranty clause

In order to enable the broad masses of consumers to feel assured and satisfied with the use of our products, our company will be seriously in accordance with the relevant laws and regulations promulgated by the state, reasonable provisions of the company's after-sales service system.

1. As the particularity of the goods, the goods will not be exchanged as soon as they are sold:

2. All machine has been sold out , the company will provide all the

technical support for how to operate the audit, adjust the difficulty, cleared and all kinds of fault handling:

3. Year warranty: All machines are guaranteed within one year after receiving the goods (except consumables), free lifetime maintenance; After one year and if you are dissatisfied with the free replacement or free warranty service, our company still provides technical services. For parts that need to be replaced, only the cost of the parts will be charged, the maintenance fee will be waived, and the buyer will bear the transportation cost.

4. The warranty takes effect on the date the buyer receives the machine.

5. One of the following conditions does not provide warranty service:

1) all human factors, damage and abnormal working environment, failure to use the instructions or fail to comply with the instructions of the environmental use of the failure and damage caused;

2) without permission of the company, the user may disassemble, repair or refit the product without authorization;

3) the damage caused by bad transportation after purchasing our products;

4) damage caused by other non resistance (such as flood, lightning, earthquake, abnormal voltage);

5) normal, worn, worn, broken and disseminated;

6) does not belong to our company's products (such as fake or counterfeit products).