

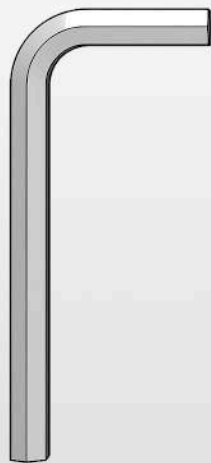
PILLOWS REPLACEMENT

INSTRUCTION

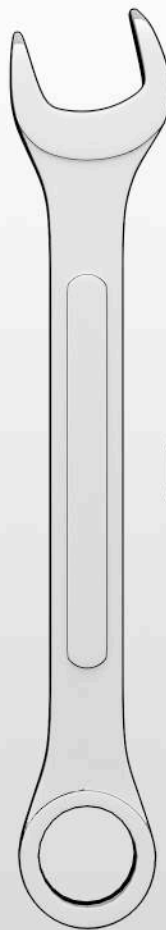
01 Tools needed

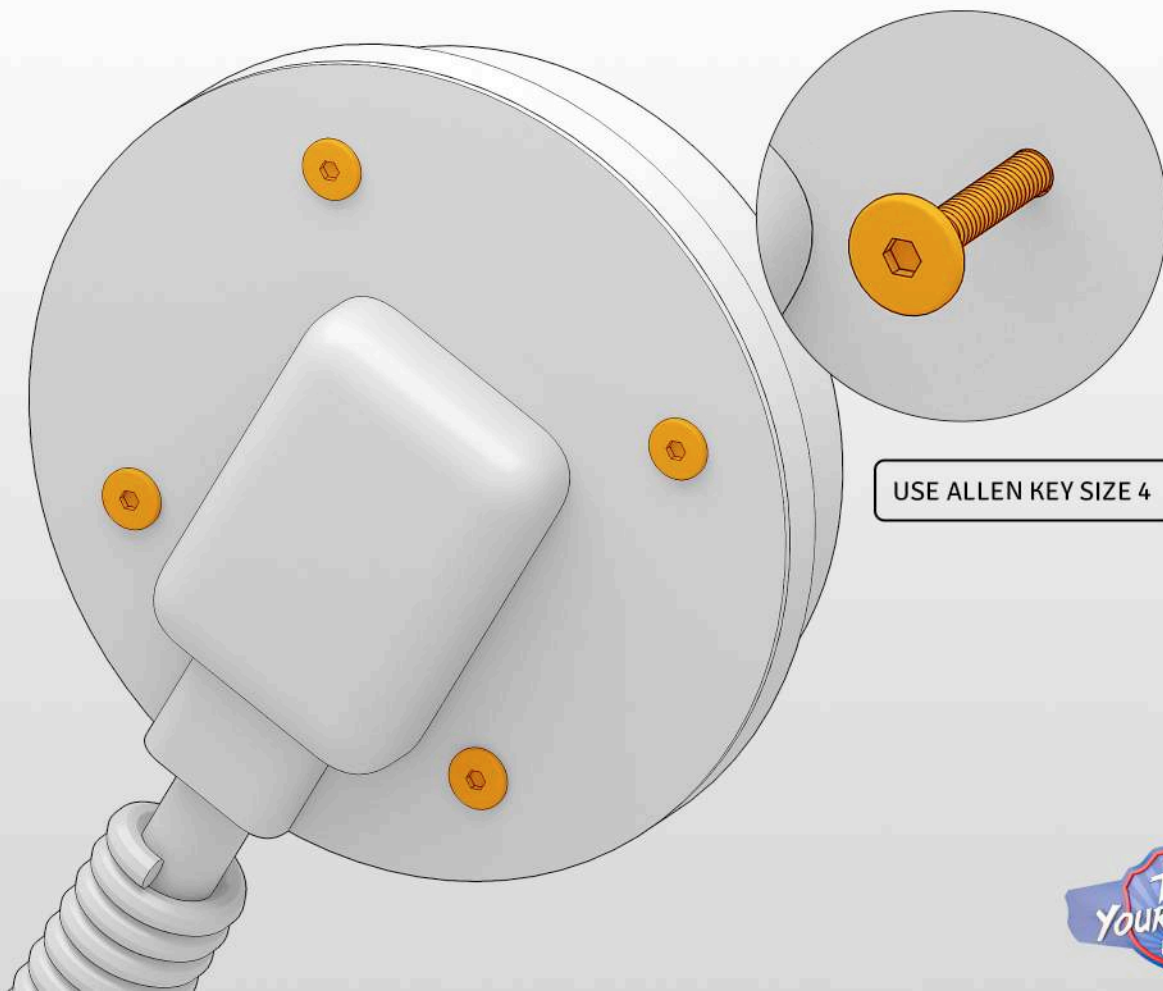
PILLOWS REPLACEMENT

ALLEN KEY SIZE 4



WRENCH NR?

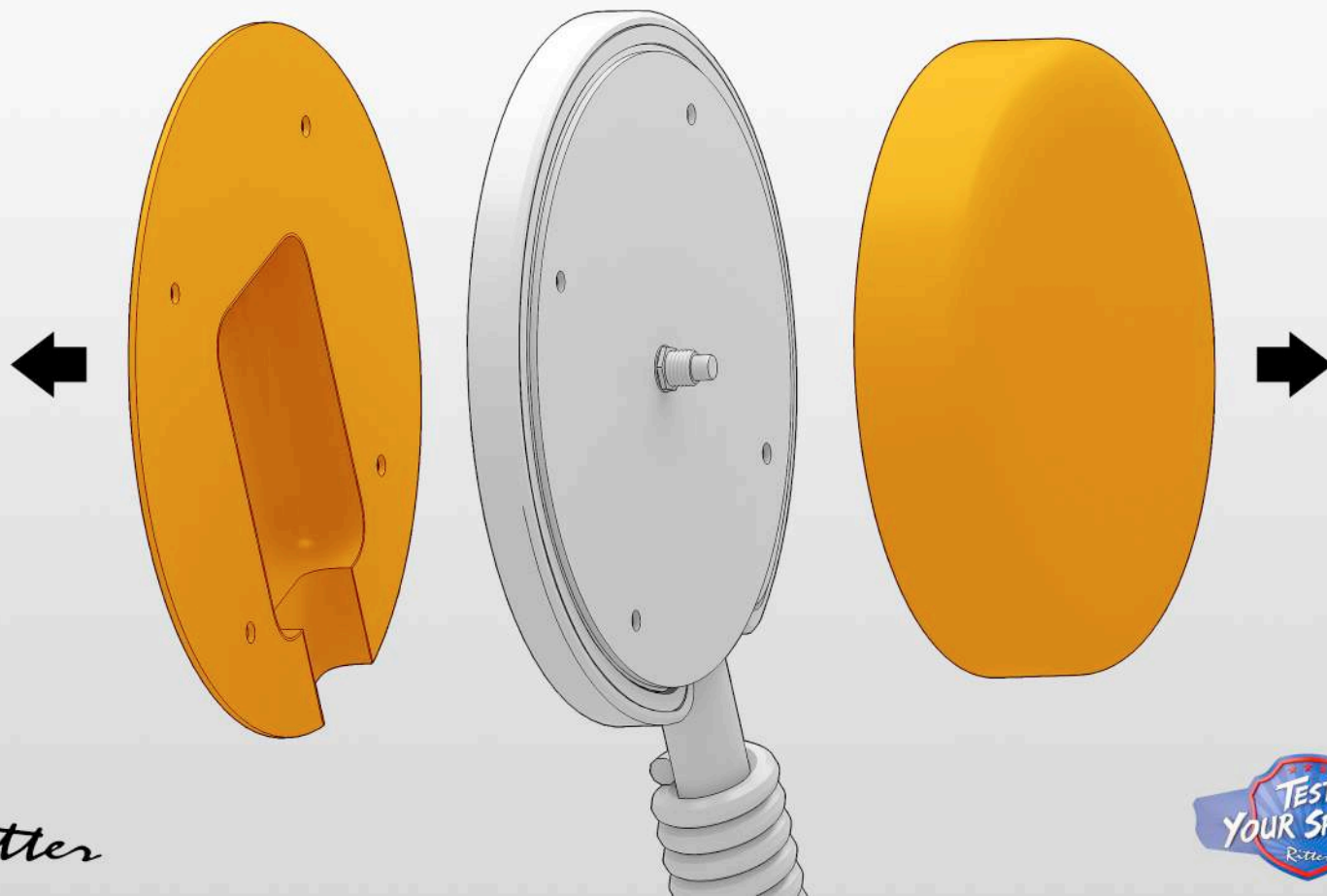




03

Remove the covers and pillows

PILLOWS REPLACEMENT



Ritter



04 Adjust the sensors to match new pillows

PILLOWS REPLACEMENT

UNSCREW THE SENSOR

USE WRENCH NR?

**REMOVE SENSOR
FROM MIDDLE HOLE**

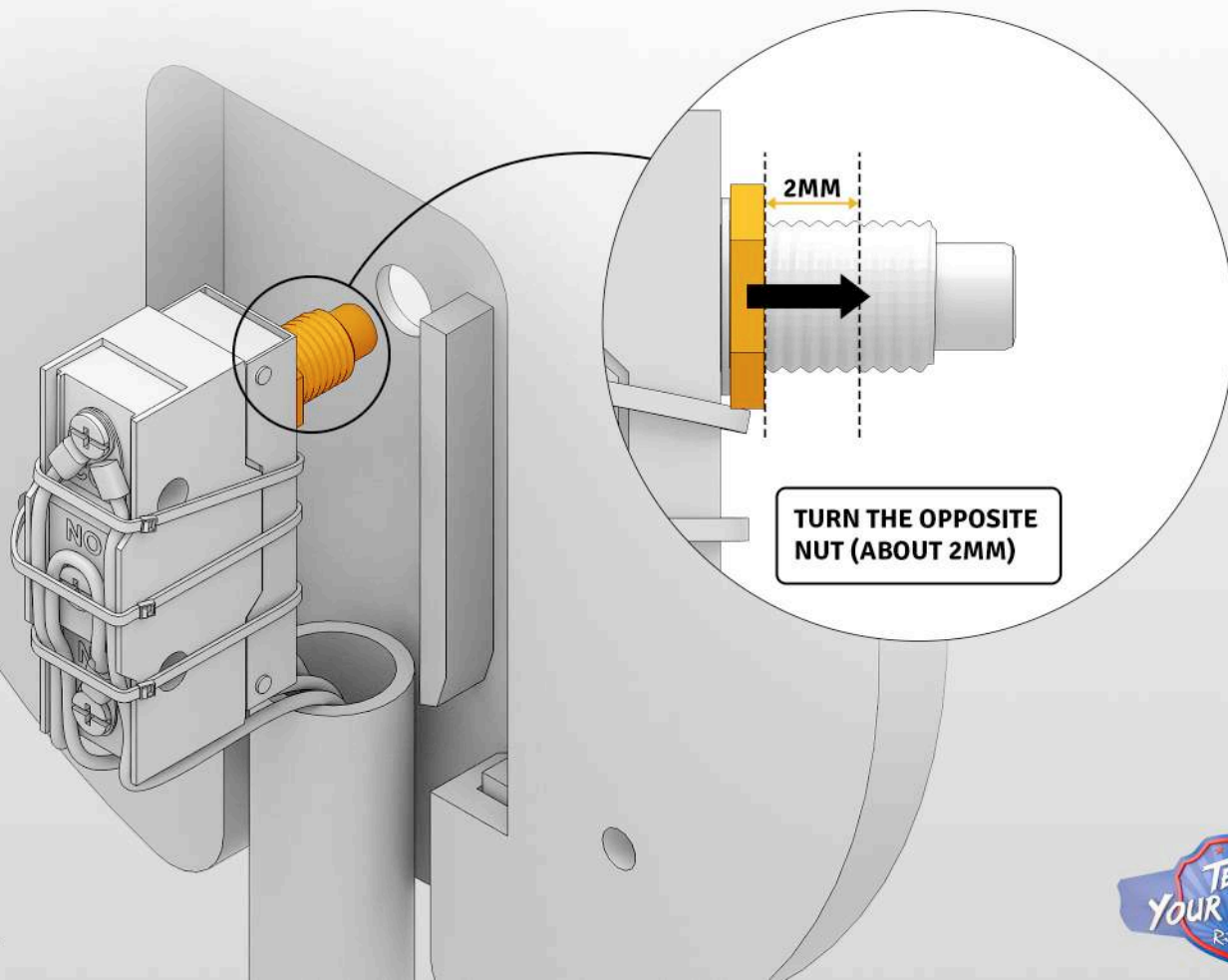


Ritter



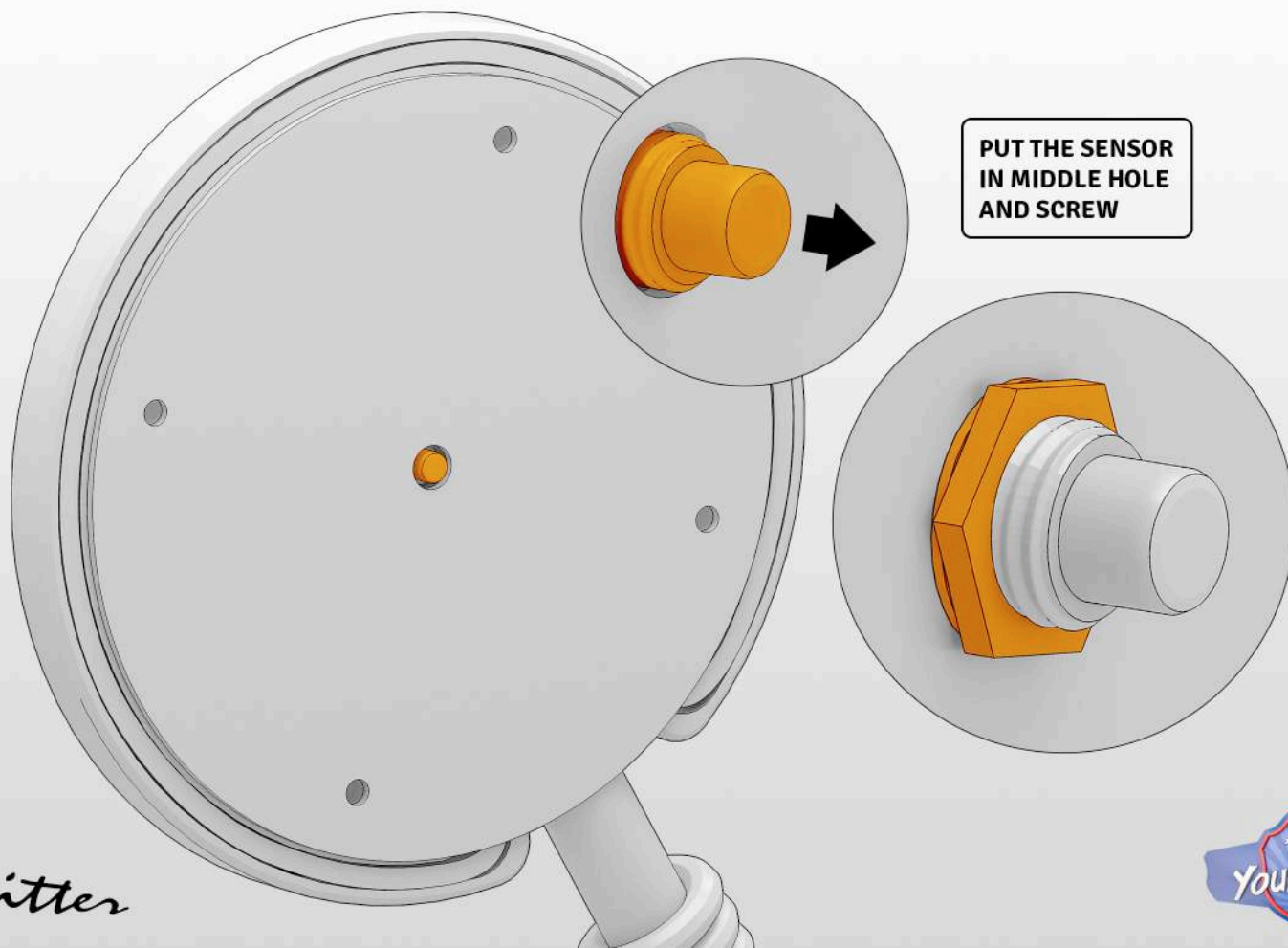
05 Adjust the sensors to match new pillows

PILLOWS REPLACEMENT



06 Adjust the sensors to match new pillows

PILLOWS REPLACEMENT

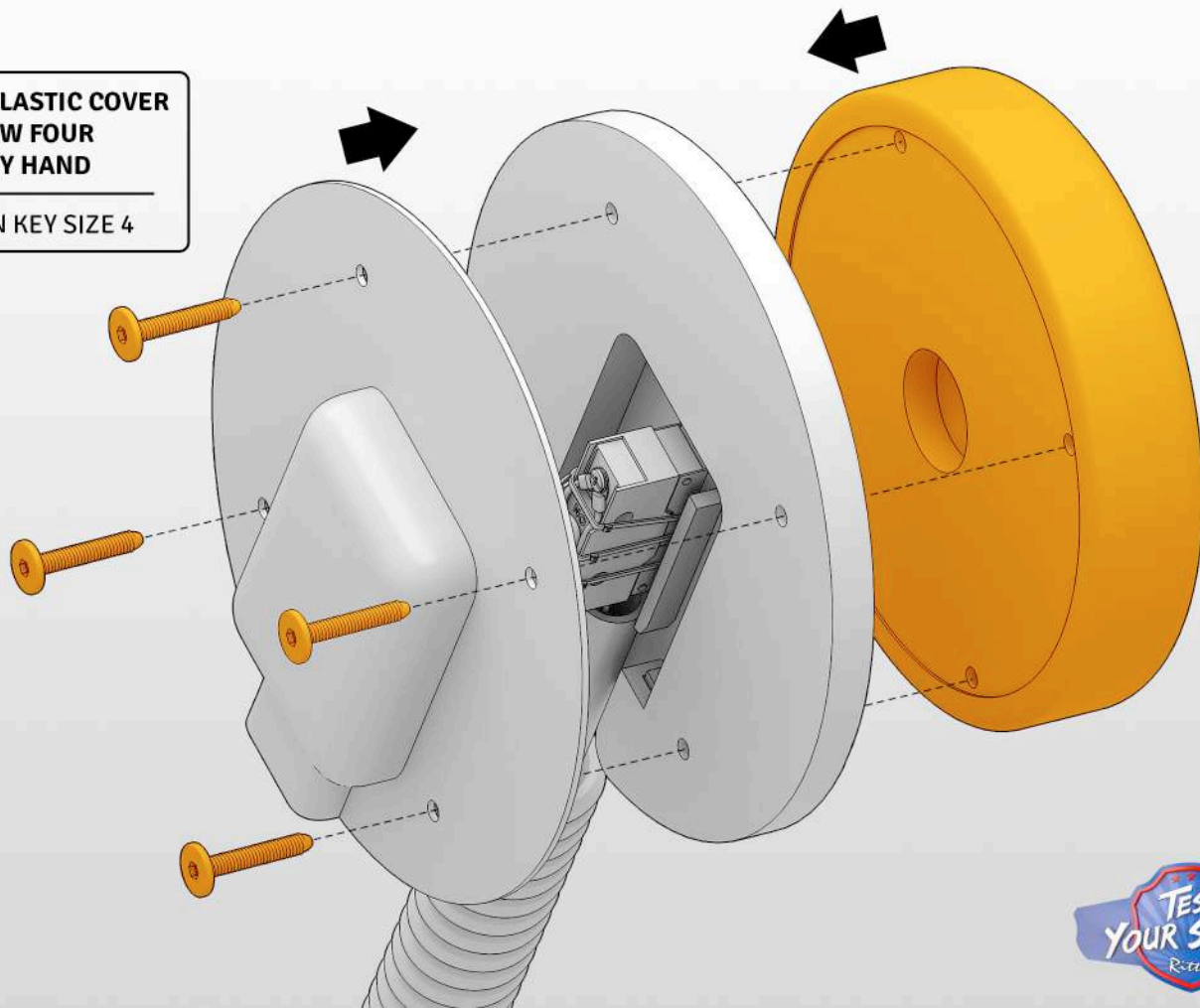


07 Install new pillow

PILLOWS REPLACEMENT

**PUT THE PLASTIC COVER
AND SCREW FOUR
SCREWS BY HAND**

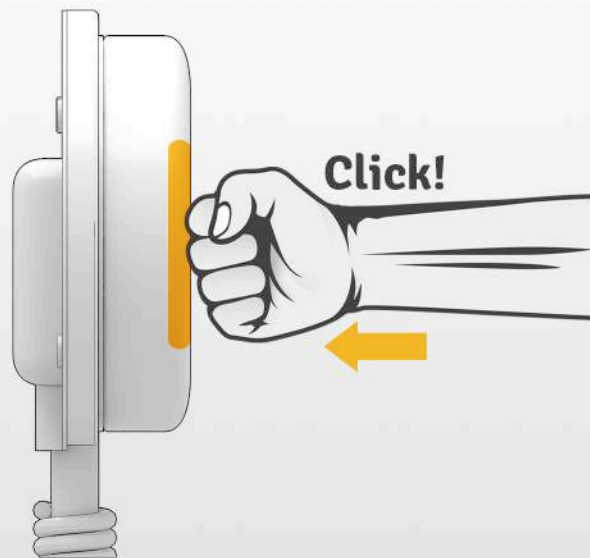
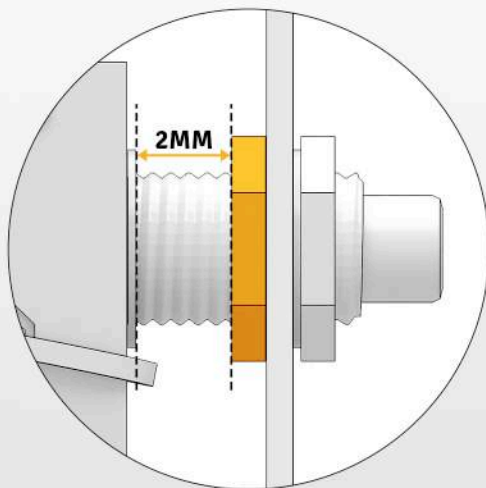
USE ALLEN KEY SIZE 4



Ritter



Important!



The sensor is moved to the direction shown in the picture by about 2mm.
After installing the cushion, check if you hear a characteristic “click” when you press the center of the cushion - **if you don't hear, move the sensor more.**